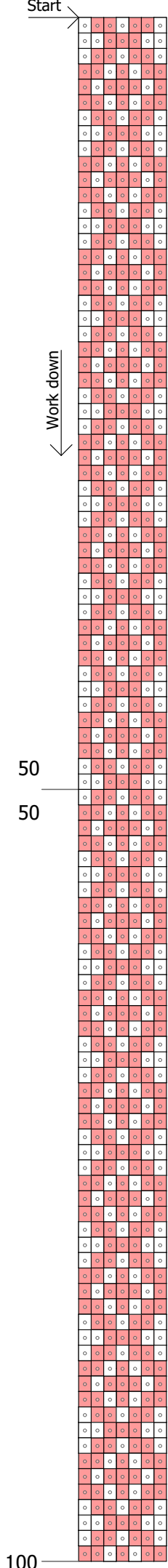
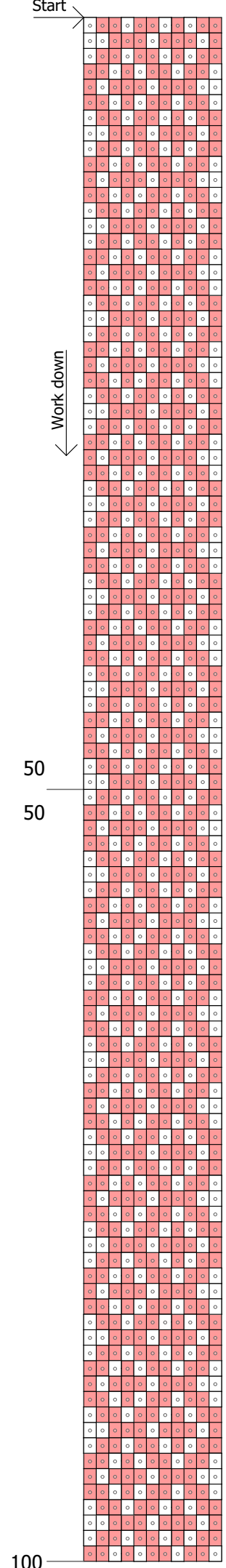


7 * 100 Loom



DB 1906 - 432 b (2,2 rp.)
 DB 201 - 268 b (1,3 rp.)

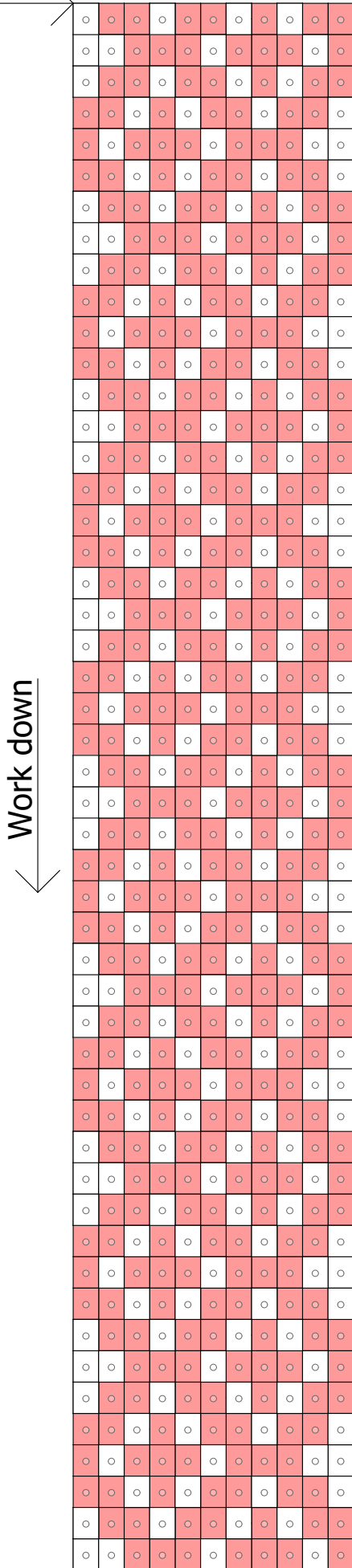
11 * 100 Loom



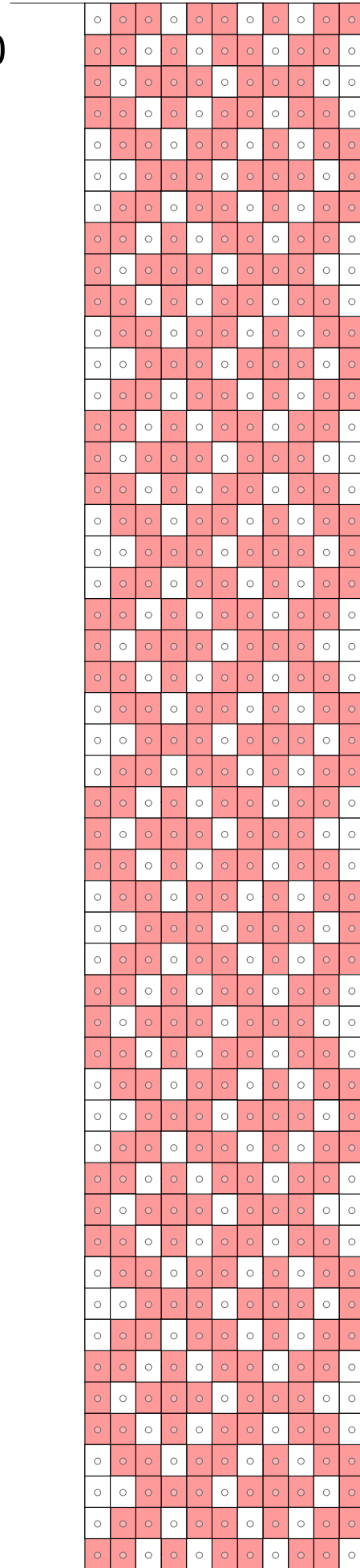
DB 1906 - 700 b (3,5 rp.)
 DB 201 - 400 b (2 rp.)

11 * 100 Loom

Start

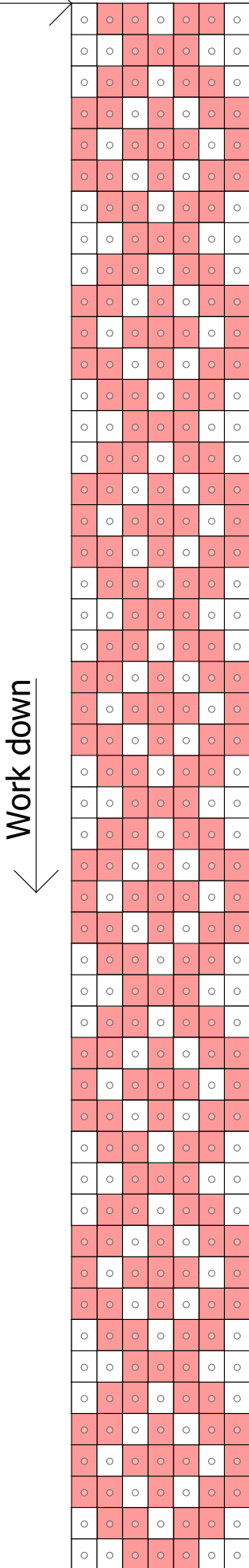


50



7 * 100 Loom

Start



50

50

