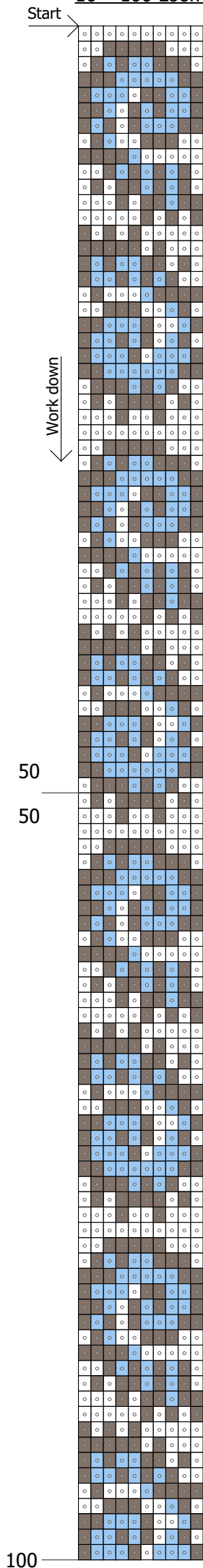
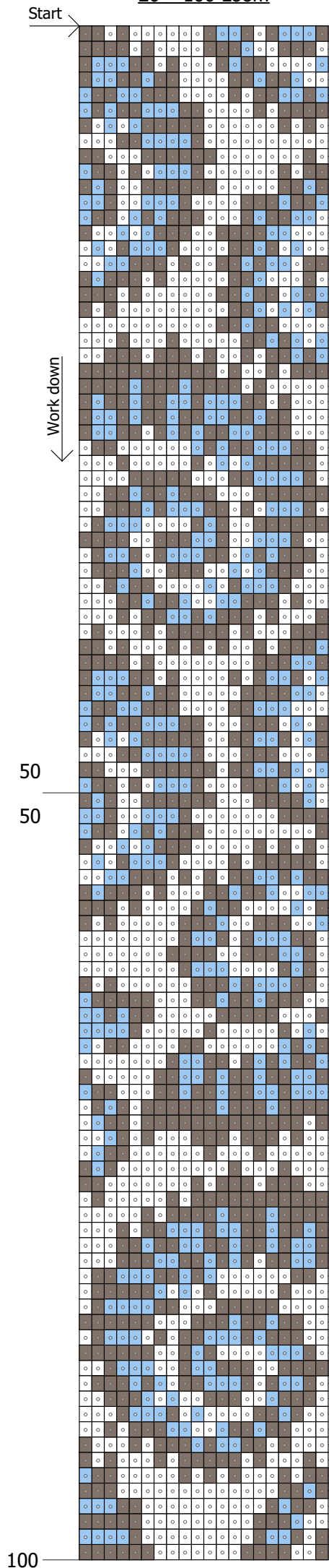


10 * 100 Loom



DB 1831 - 419 b (2,1 гр.) DB 166 - 232 b (1,2 гр.) DB 200 - 349 b (1,7 гр.)

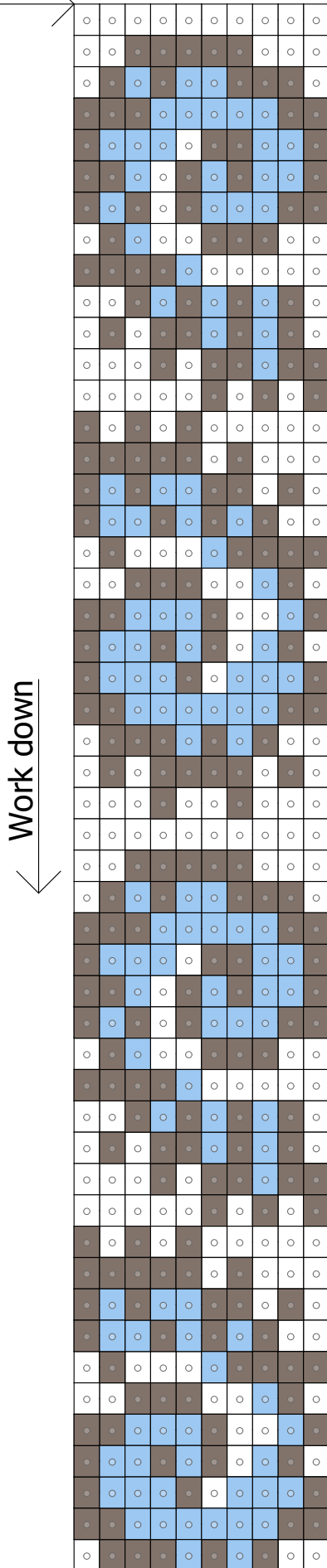
20 * 100 Loom



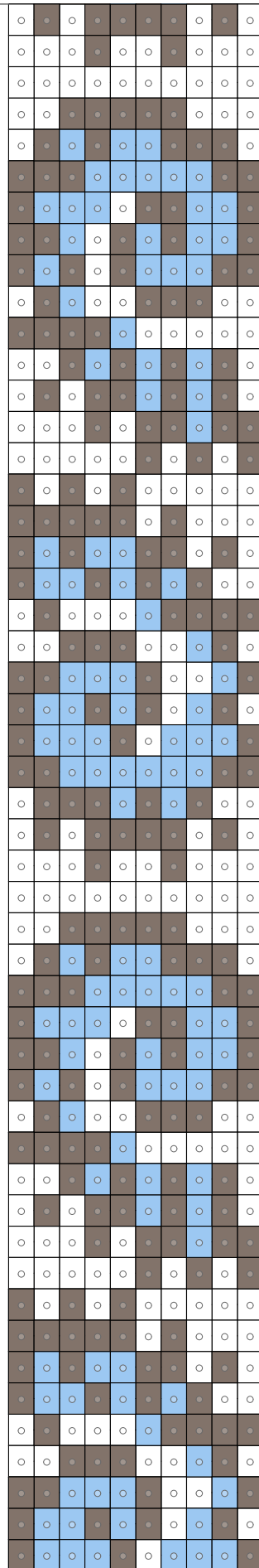
DB 1831 - 846 b (4,2 гр.) DB 166 - 370 b (1,9 гр.) DB 200 - 784 b (4 гр.)

10 * 100 Loom

Start



50

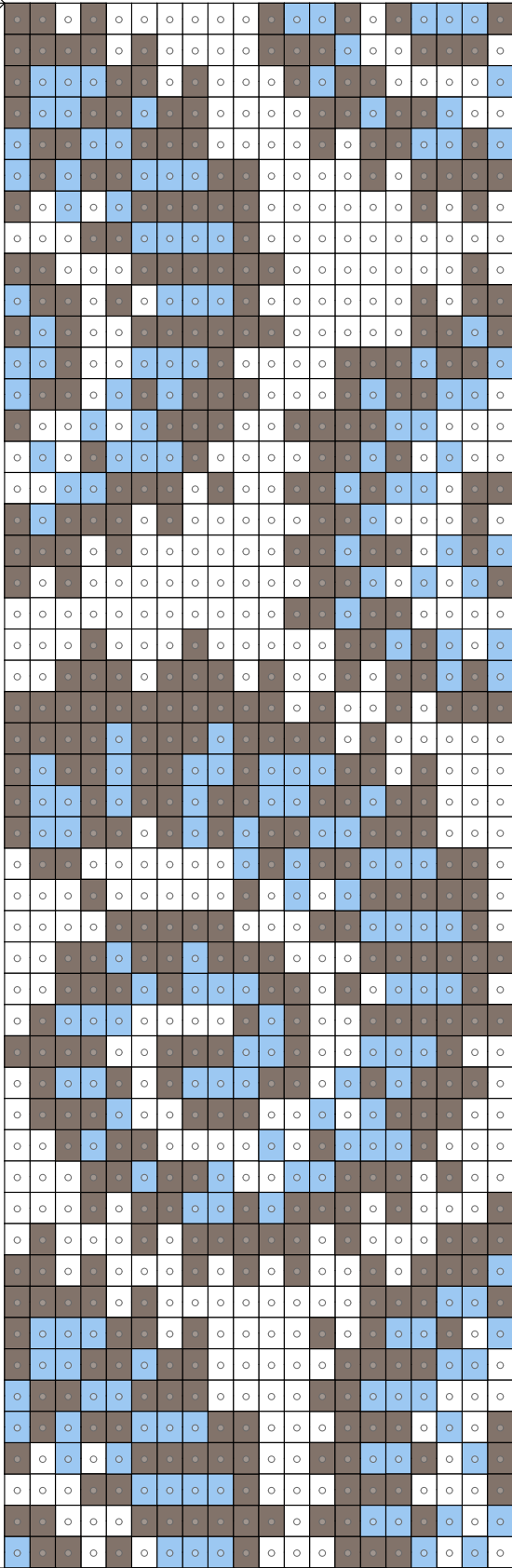


20 * 100 Loom

Start

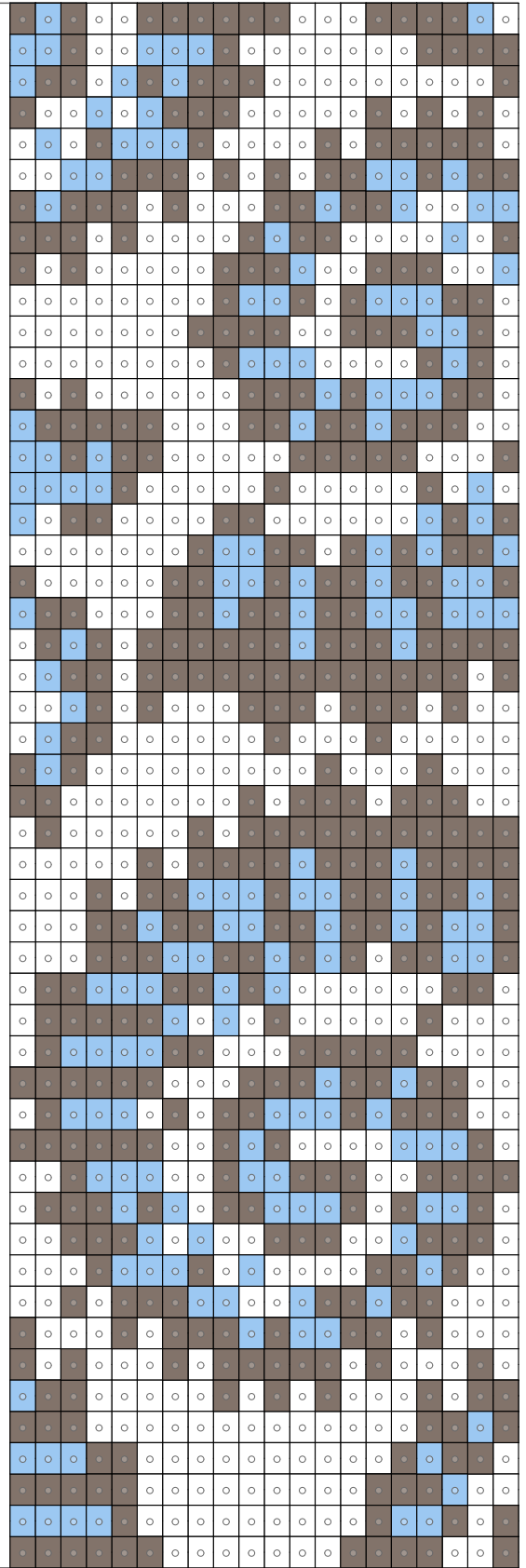
Work down

50



50

100



26 * 100 Loom

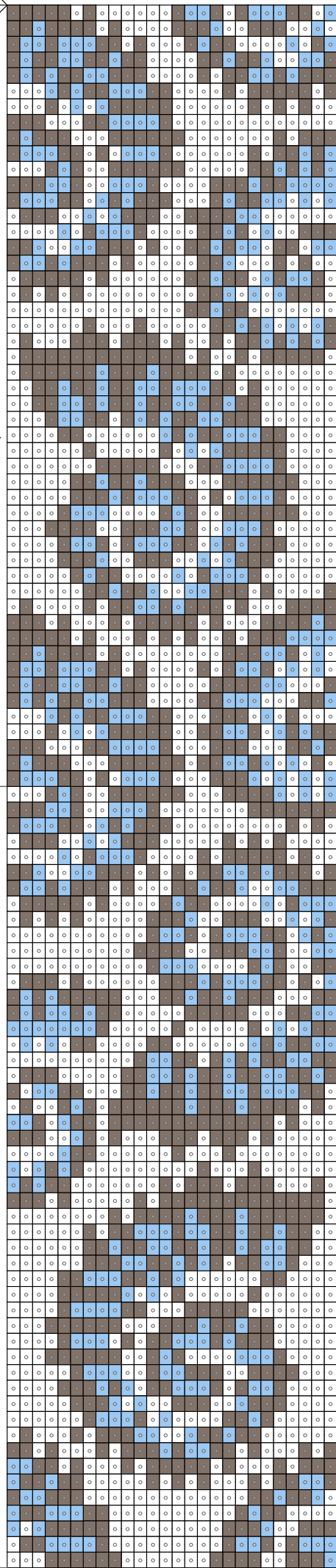
Start

Work down

50

50

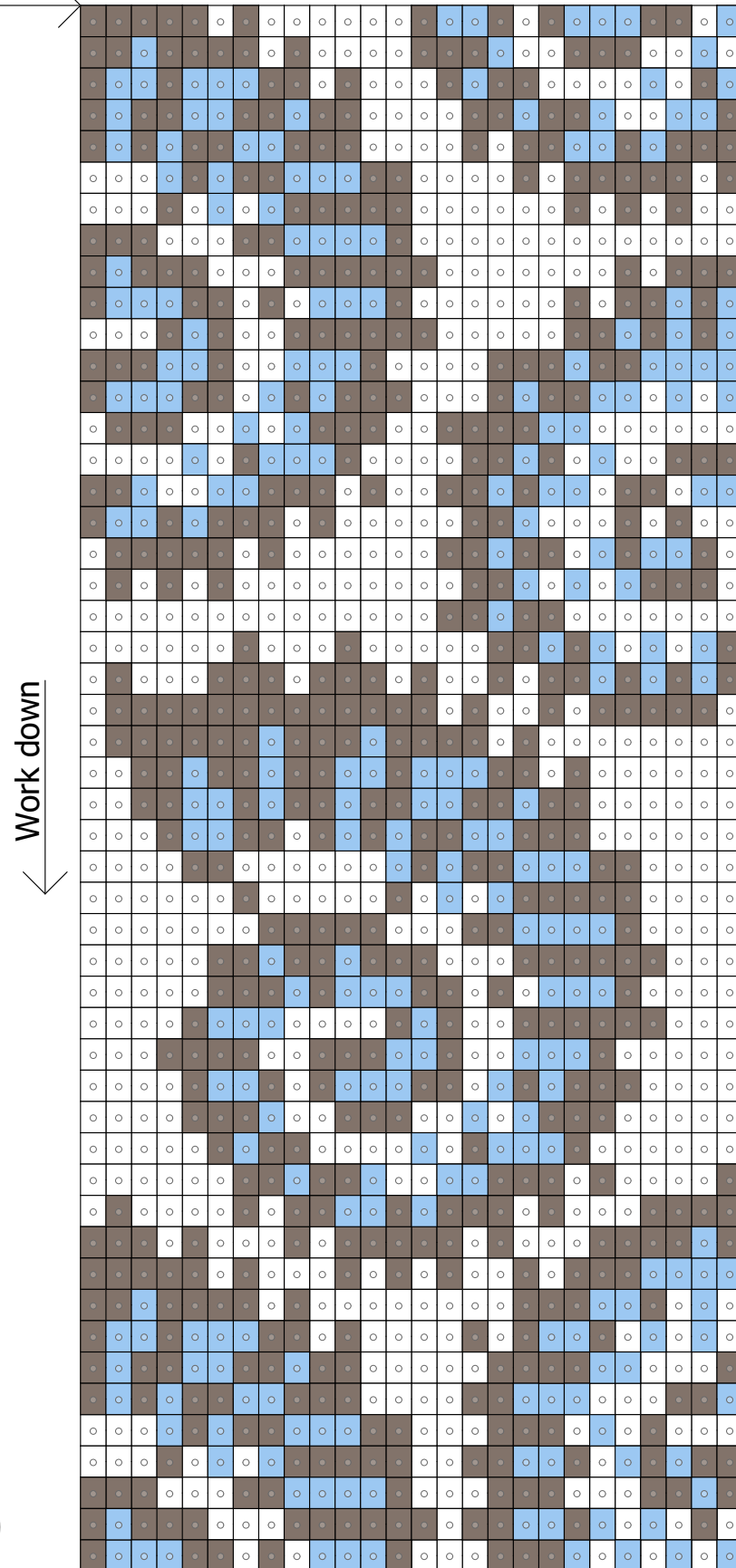
100



- DB 1831 - 1029 b (5,1 rp.)
- DB 166 - 472 b (2,4 rp.)
- DB 200 - 1099 b (5,5 rp.)

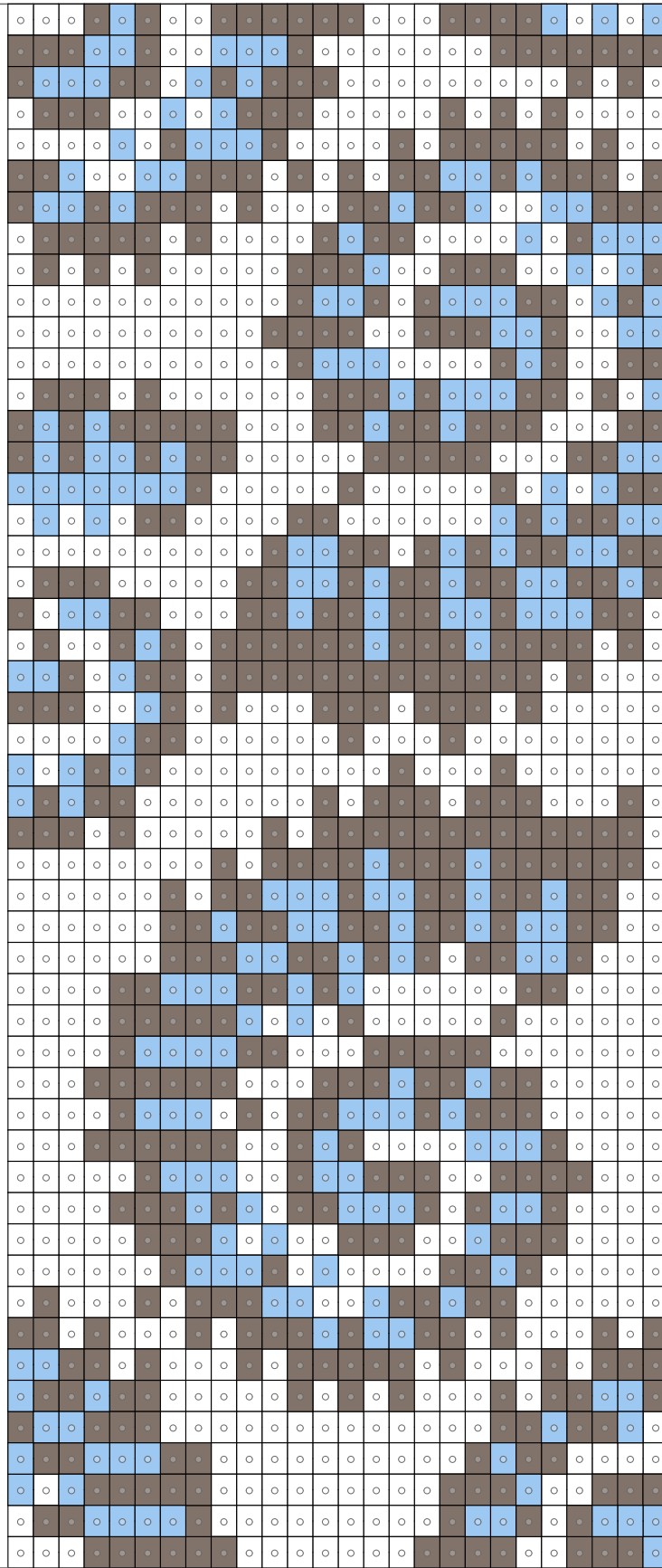
26 * 100 Loom

Start



50

50



100