

# 17 \* 100 Loom

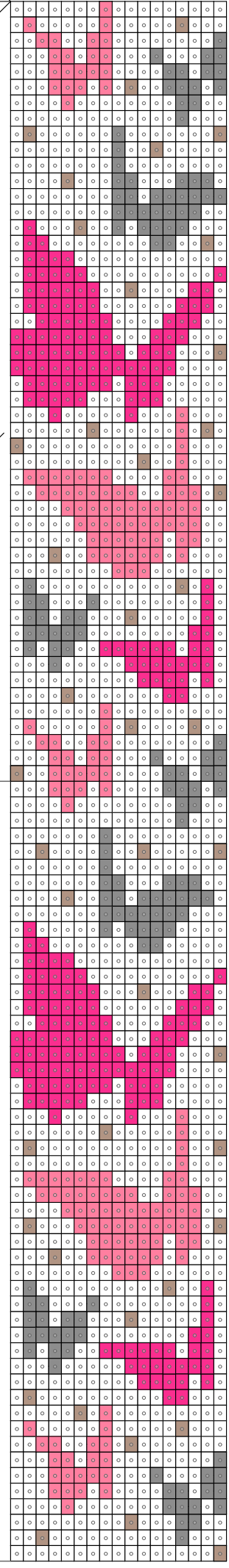
Start

Work down

50

50

100



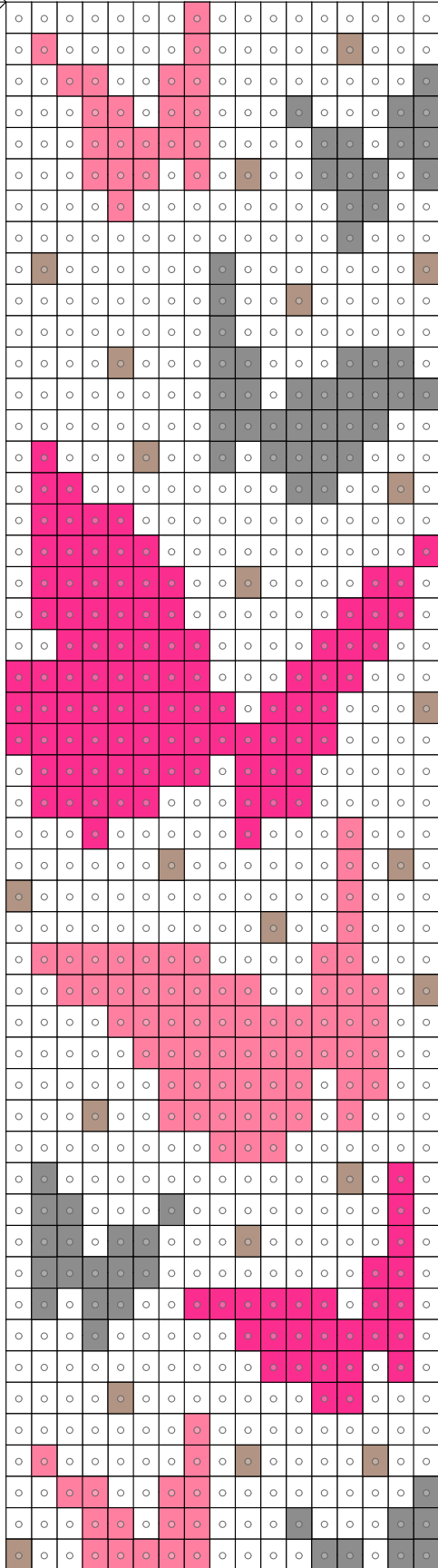
- DB 200 - 615 b (5,4 гр.)
- DB 1832 - 43 b (0,2 гр.)
- DB 1742 - 244 b (1,2 гр.)
- DB 1906 - 189 b (0,9 гр.)
- DB 868 - 139 b (0,7 гр.)

# 17 \* 100 Loom

Start

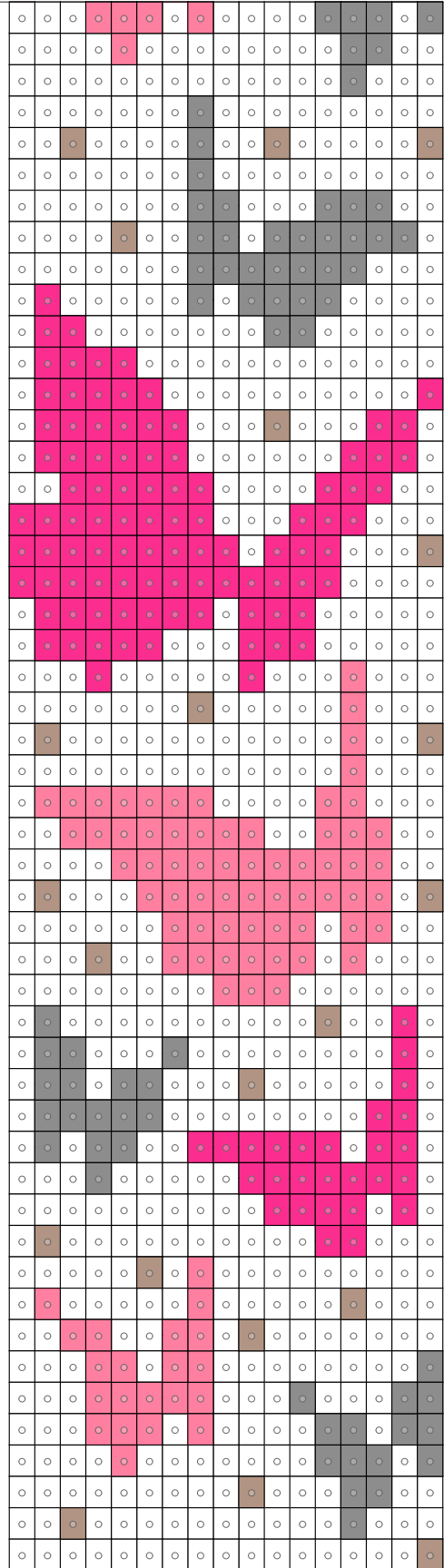
Work down

50

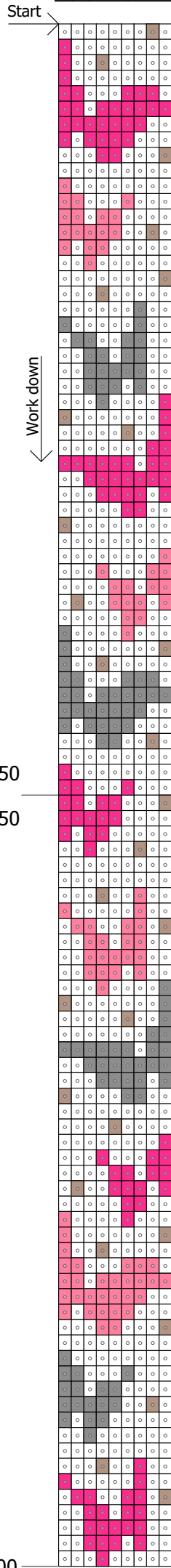


50

100

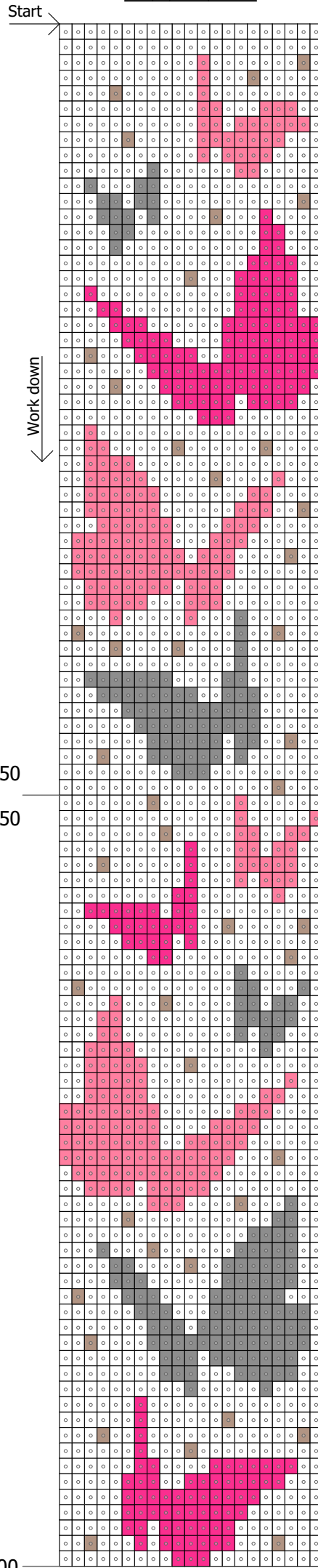


9 \* 100 Loom



- DB 200 - 584 b (2,9 гр.)
- DB 1832 - 28 b (0,1 гр.)
- DB 1742 - 110 b (0,6 гр.)
- DB 1906 - 83 b (0,4 гр.)
- DB 868 - 95 b (0,5 гр.)

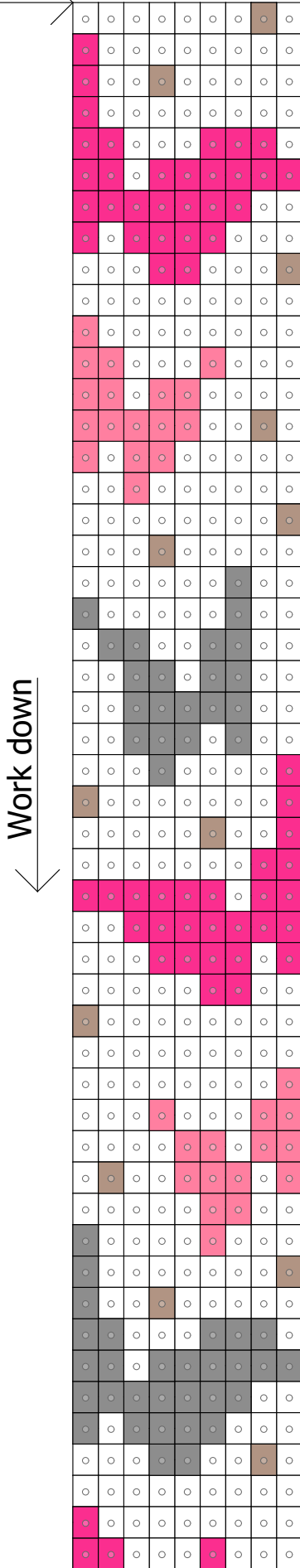
21 \* 100 Loom



- DB 200 - 1429 b (7,1 гр.)
- DB 1832 - 43 b (0,2 гр.)
- DB 1742 - 191 b (0,9 гр.)
- DB 1906 - 247 b (1,2 гр.)
- DB 868 - 190 b (1 гр.)

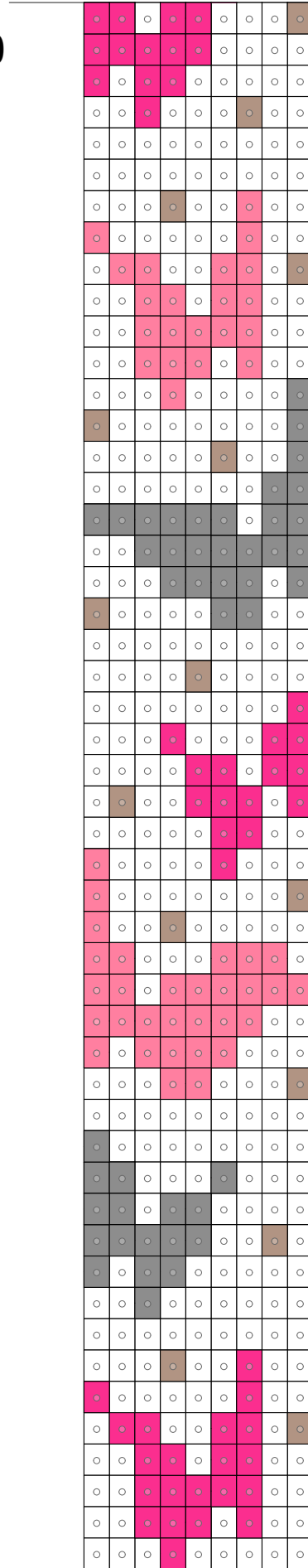
# 9 \* 100 Loom

Start



50

100



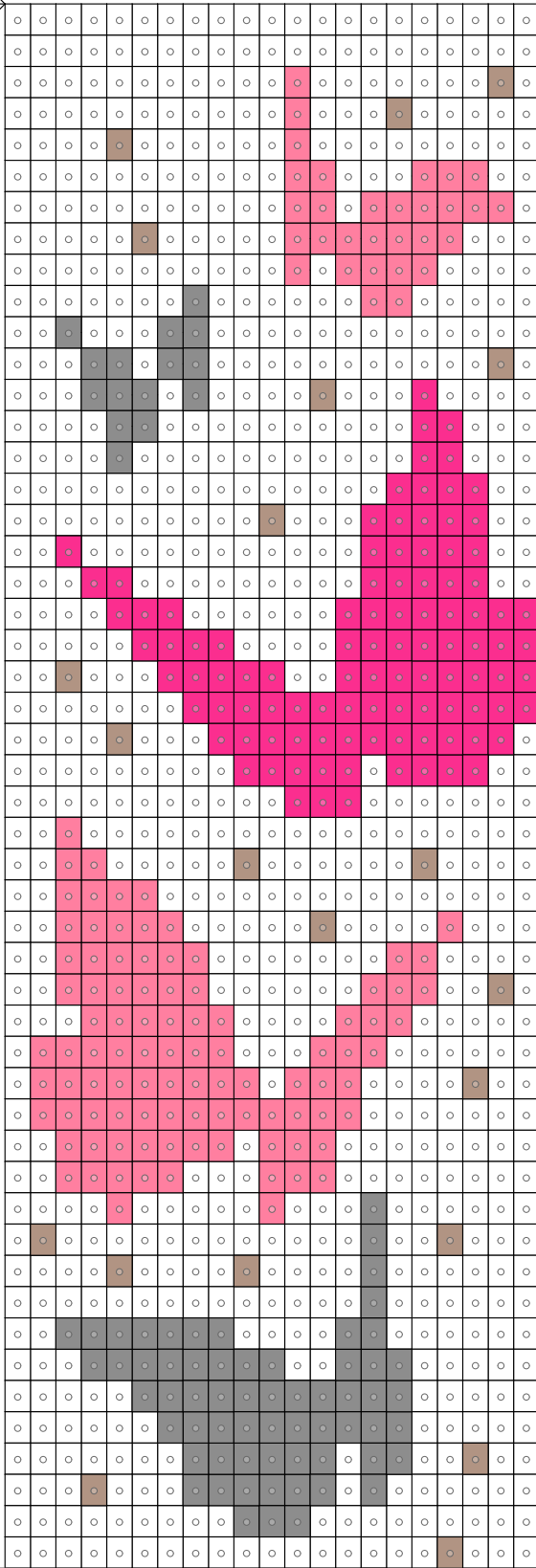
# 21 \* 100 Loom

Start

Work down

50

100



50

